

# Evil Eye Gloves for Gun Control - SEWING INSTRUCTIONS

By Nancy Sabin



- 1) Cut out 4 GLOVE pieces, 2 left mirroring 2 right, from Polar Fleece. Make sure that the stretch goes across width of the hand (side to side), rather than the length (fingertips to wrist). **(Download patterns below, page 3.)**
- 



**For the standard Eye shape:**

- Cut out 2 LARGE EYE pieces from *black* Polar Fleece or felt.
- Cut out 2 SMALLER EYE pieces from *white* Polar Fleece or felt.
- Cut out 2 round “EYEBALL/IRIS” pieces from *blue* Polar Fleece or felt.
- Cut out 2 “PUPIL” pieces from *black* Polar Fleece or felt.
- Sew each smallest eye piece onto the next largest (black pupil onto blue iris onto white of eye onto black background) with matching thread for each color. \*



-----  
**OR...**  
-----



**For the round concentric circle Evil Eye:**

- Cut out 2 large round pieces from COBALT or ROYAL BLUE Polar Fleece or felt.
- Cut out 2 smaller round pieces from WHITE Polar Fleece or felt.
- Cut out 2 smaller round pieces from LIGHT BLUE or TURQUOISE Polar Fleece or felt.
- Cut out 2 smallest pieces from BLACK Polar Fleece or felt.
- Sew each smallest eye piece onto the next largest (black pupil onto blue eyeball onto white, onto black) with matching thread for each color. \*

\*\*\*\*\*

- 2) Turn down top edge of glove 1/2" toward inside ("wrong" side). Sew with large zigzag stitch (to allow stretch of the width of the glove), 1/4" from edge.
- 3) Repeat last step for the bottom edges of the glove.
- 4) Sew completed eye onto right side of palm of glove. Be sure that you have a right and a left.
- 5) With right sides together, sew side seam of glove with 1/4" seam straight stitch. Clip excess to 1/8".
- 6) Sew upper thumb & finger "U"- shaped side.
- 7) Sew lower thumb side down to wrist.
- 8) Clip excess and clip curves.
- 9) Turn right-side out, and you are done! **MARCH ON!!**



## Evil Eye Gloves for Gun Control - NOTES

- \* The eyes may be made out of Polar Fleece or felt. Felt will shrink and look more bumpy, however, so if you think you would want to wash these, I would recommend the Polar Fleece.
- \* Due to so much thread color-changing, if making several pairs of gloves, it is less work to do each of the steps “factory style”. (Do the same step for all of them, then change thread color and do next step for all, etc.)
- \* It lies down more smoothly to sew all of the layers of the Evil Eye together first, making a *patch*, then sewing that onto the flat glove piece, rather than sewing each layer directly onto the glove. I tried the latter on the purple pair pictured, and you can see it is bumpier and pulled inward.
- \* You may also choose to use glue or iron-on fusible bonding web, such as *Stitch Witchery*, instead of sewing the layers for the eyes. Again, makes it less washable, but if only wearing these for the March, that might not be an issue.
- \* For faster construction, you may skip turning down and stitching the edges of the gloves, since Polar Fleece self-binds nicely. I liked the more finished look, but just cut 1/2” off of the top and bottom on your pattern if you choose not to hem the edges.
- \* The gloves pictured in the “group photo” are my various prototypes that brought me to the patterns below, so they do not all look exactly like the pattern. The pink one on page 1 is the final glove shape and length. (The gray one on page 2 is longer in the fingers than my final pattern.
- \* You will need 1/3<sup>rd</sup> of a yard of Polar Fleece to make this pair of gloves, and because they are often 60” wide on the bolt, you will have enough to make 2 pairs, plus one more single glove if you really squeeze the patterns onto 6” widths.
- \* This pattern fits a **Med/Large** Women’s and a **Med** Men’s hand. If you need smaller or larger, the easiest method would be to enlarge or shrink the patterns on a copier, to keep the proportions.

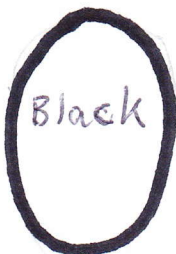
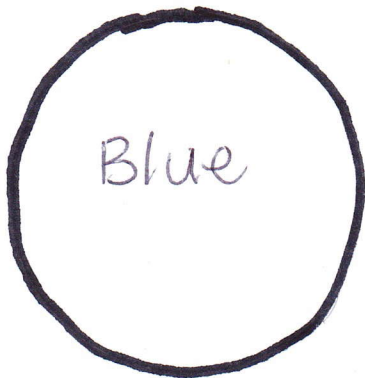
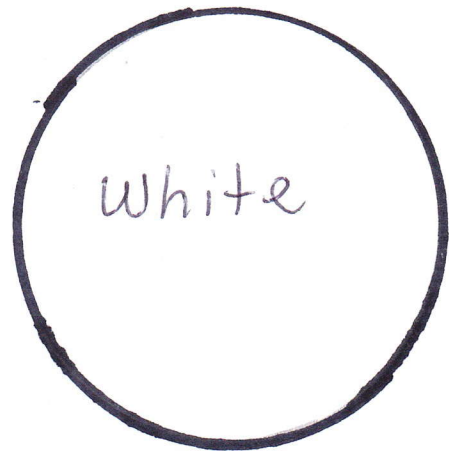
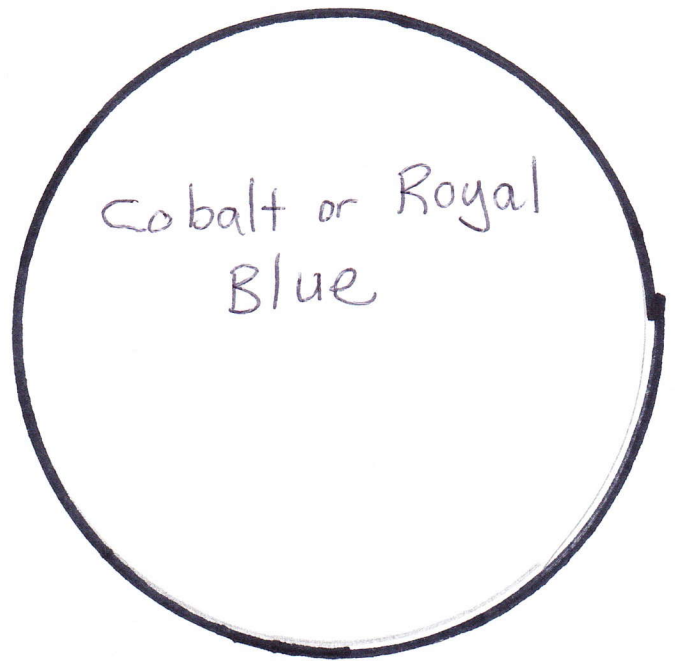
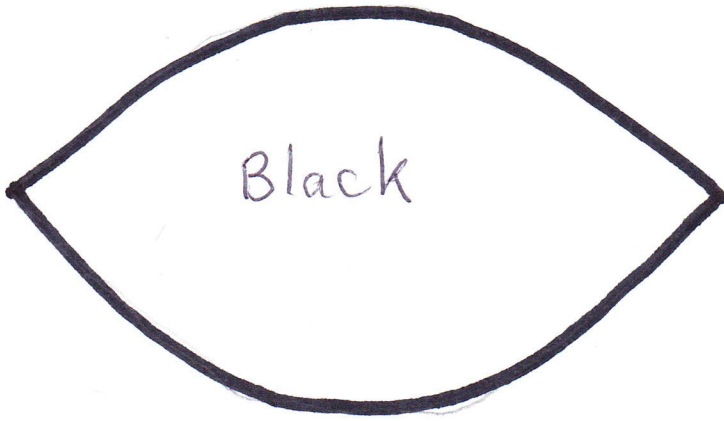
\* See patterns **HERE**.

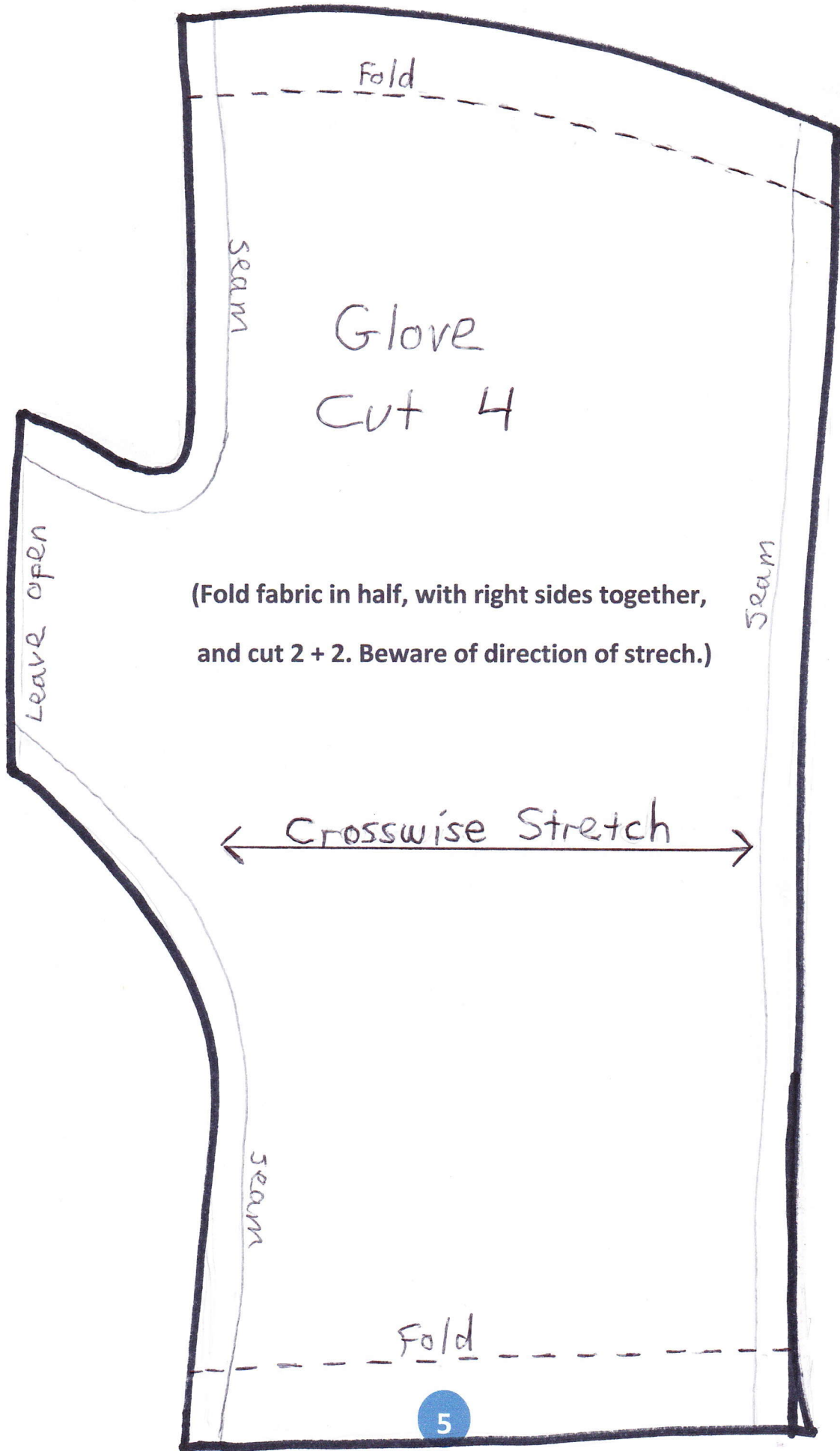
Evil Eye Glove  
Patterns.pdf

(Print out onto 8.5”x11” paper.)



Evil Eye Gloves for Gun Control – PATTERNS





Glove  
Cut 4

(Fold fabric in half, with right sides together,  
and cut 2 + 2. Beware of direction of stretch.)

← Crosswise Stretch →

**\*Have fun!**

**\*\*\*Thank you, Krista Suh, for another idea**

**to bring us together in raising our voices! \*\*\***

~By Nancy Sabin

#evileyeglove

#marchforourlives



*(These are just some of the 150 Pussy Hats that Nancy made for the Women's March in 2017.)*

